

You'll be walking down the hill on the stony path, take care if the stones are wet.

The churchyard contains 23 Commonwealth war graves from the First and Second World Wars.



3 Mind the steps as you exit the churchyard through the black iron gate and cross Rosedale Avenue where you'll see the entrance to Fishponds Wood on your left.

Fishponds Wood can be seen on early maps of Acomb village dating from 1774. It is understood that there were three large ponds here and anecdotal evidence that the ponds were used to stock fish for the villagers.

You can take one of the tracks through the woods to avoid the next road section on Danebury Drive, but these tracks can be very muddy in the winter so watch your footing.

Stay left and exit the woods using the first left onto Danebury Drive. Turn right and walk north along Danebury Drive.

4 Shortly after the Viking Road junction, look for the path on the right which takes you up an incline on the other side of Fishponds Wood. Whilst you make your way up this path, see if you can spot the wooden carvings atop previously felled trees.



5 Exit by the large Fishponds Wood sign (it'll be behind you) and turn right. You'll soon reach Rosedale Avenue, take care crossing the road. To your left you'll see the beech trees which give Beech Grove its name.

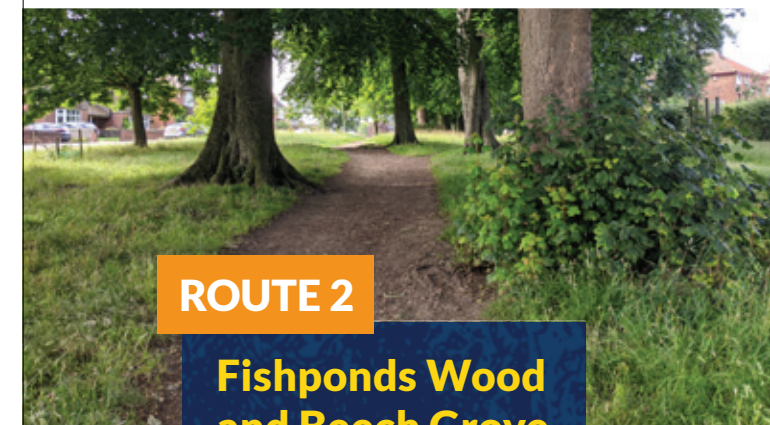
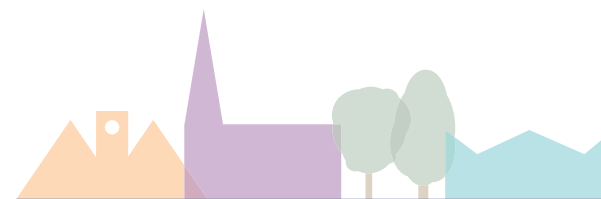


These trees were planted when this area was in the grounds of Acomb Hall.

6 Walk up the path through the trees and continue along Beech Grove. You'll exit at a traffic island on York Road. Cross carefully and continue through to the hustle and bustle of Front Street.

7 Use the pedestrian crossing by the Gateway Church and continue west along Front Street. Cross the road using the island by Morrisons and head back towards the library.

This project is brought to you by Move the Masses, a small charity making a big impact in York.



ROUTE 2

Fishponds Wood and Beech Grove

Acomb Ambles is a project designed to bring people together for short, gentle walks to explore the history and hidden green spaces of Acomb.

There are three routes in Acomb to explore, and you can also join one of our very gentle walking groups, for a slow amble with plenty of opportunities to sit and chat.

If you enjoyed your amble we'd love to know about it. Share your pictures with us on social media @MTMcharity using the hashtag #AcombAmbles.



Funded by your
Ward Committee



To download maps or find out more about this project or our walking groups, go to: movethemasses.org.uk/acombambles

ROUTE 2

Fishponds Wood and Beech Grove

(1.2 miles / 1.9km)

This route includes some off-road sections which are uneven and could be muddy when wet. We recommend sturdy shoes.

Acomb is one of three villages (the others being Middlethorpe and Dringhouses) which were incorporated into the City of York in 1917. Acomb is full of fascinating history and secret green spaces, we hope you enjoy exploring!

Starting at the library on Front Street, turn right and cross the road using the pedestrian crossing.

1 Continue along the street, turning left at the wide alleyway leading up the hill.

Once you reach the top of the path, take care crossing the road into St Stephens Churchyard.



At the top end of the churchyard there are benches to rest and enjoy the tranquil space. Why not wander and look more closely at the church itself?

The earliest records of St. Stephen's Church go back to the 12th Century. According to Acomb Parish, in 1830 the old church was reported as "ruinous and in decay and not capable of repair and is unfit for the purpose of celebrating Divine Service and Sermons therein". A faculty was obtained to build a new church to a design by Joseph Hansom. The present church was completed in 1832, but the old chancel remained. The chancel was rebuilt in 1851. Much of the old stone was used in rebuilding.

2 Continue down the path through the churchyard and stay right as the path splits.

